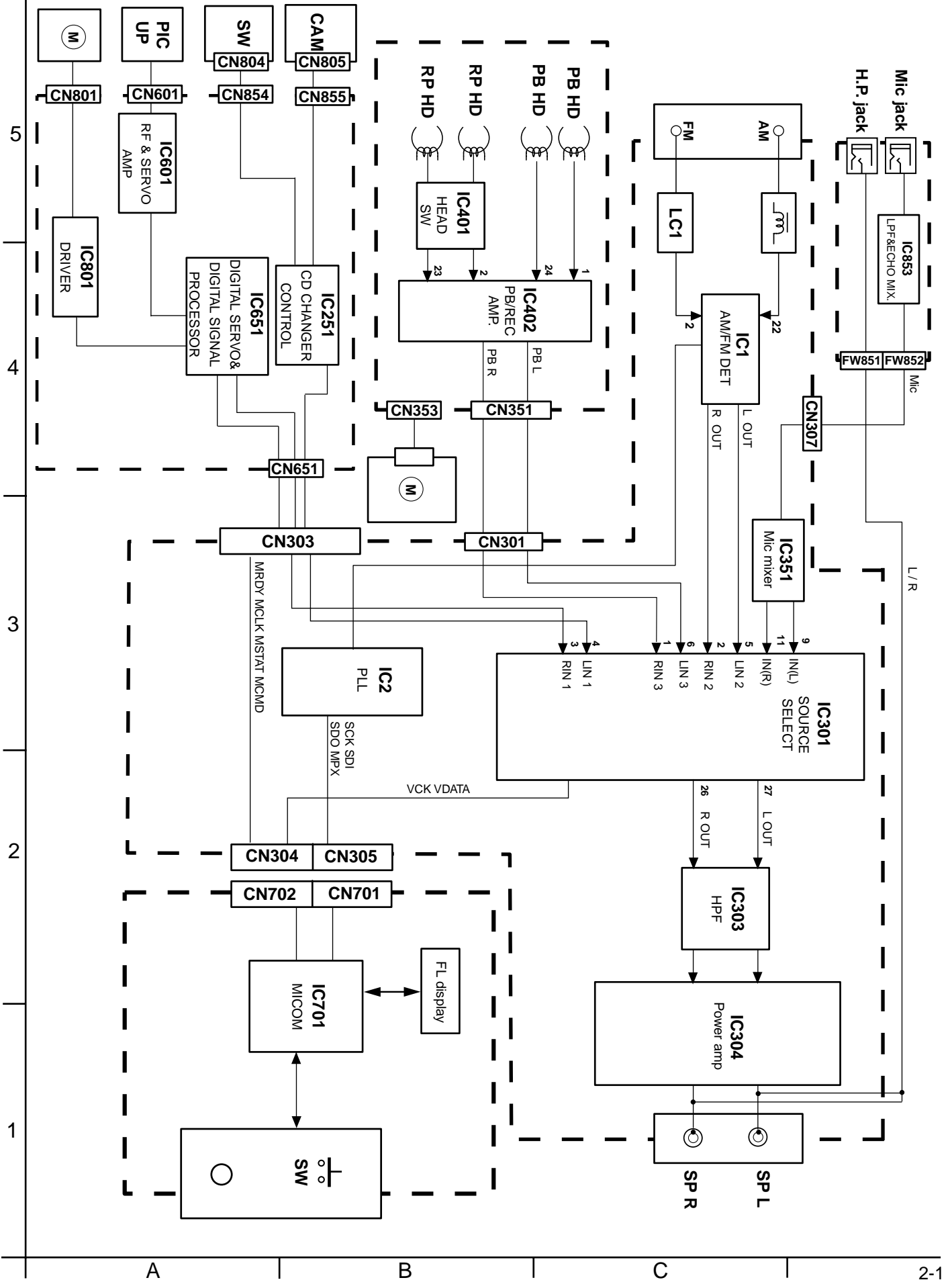


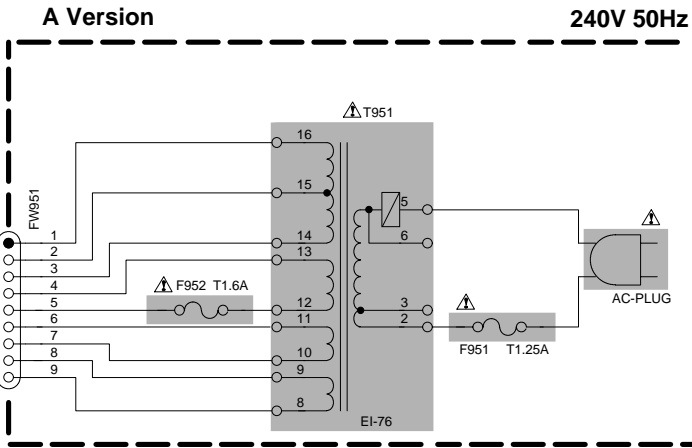
Block diagram



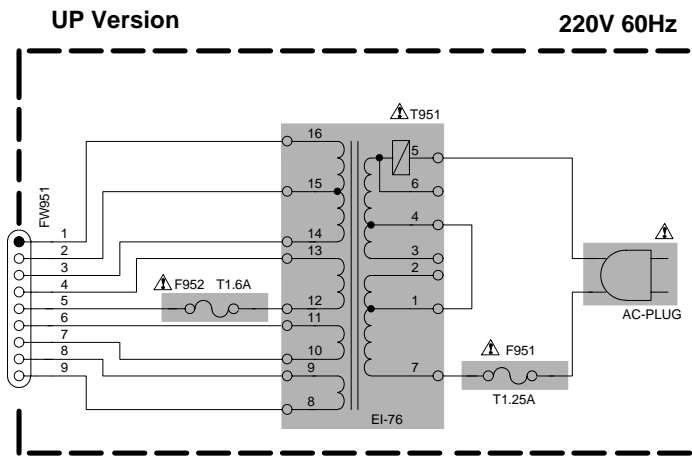
Standard schematic diagrams

■ Power transformer section

5



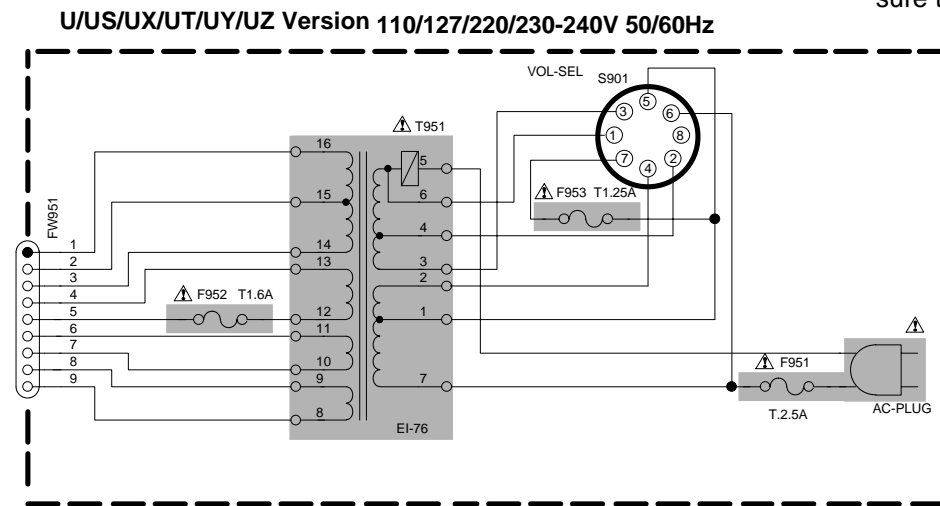
4



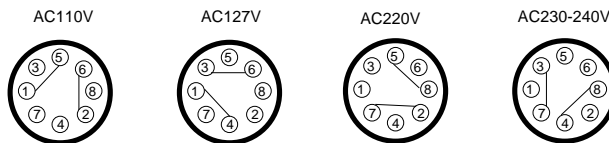
3

⚠ Parts are safety assurance parts. When replacing those parts make sure to use the specified.

2

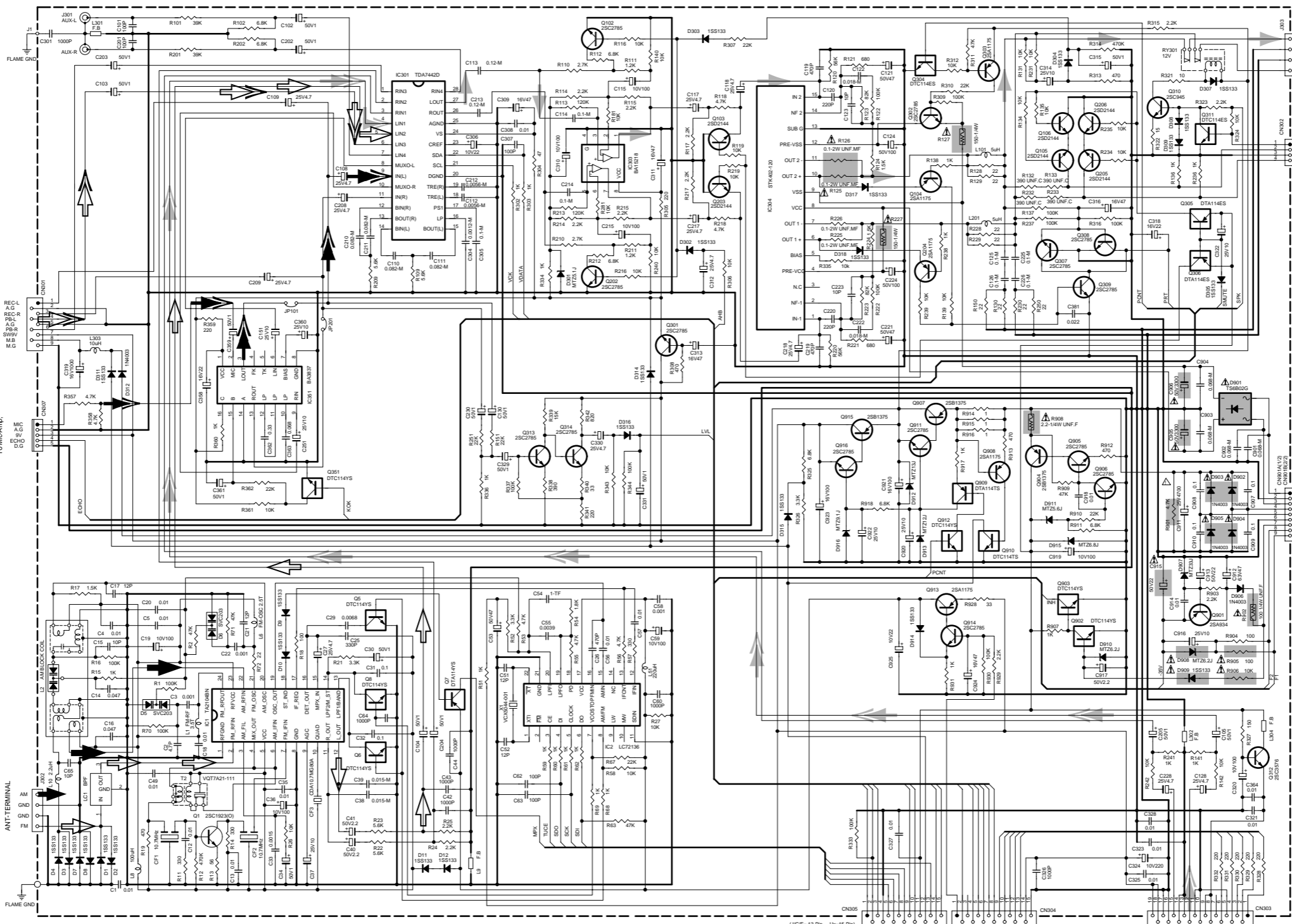


1



■ Main section

5
4
3
2
1



- ➔ MAIN signal
- ➔ TAPE P.B. signal
- ➔ AM signal
- ➔ FM / TUNER signal
- ➔ CD signal
- ➔ MIC signal

⚠ Parts are safety assurance parts.
When replacing those parts make
sure to use the specified.

Control section

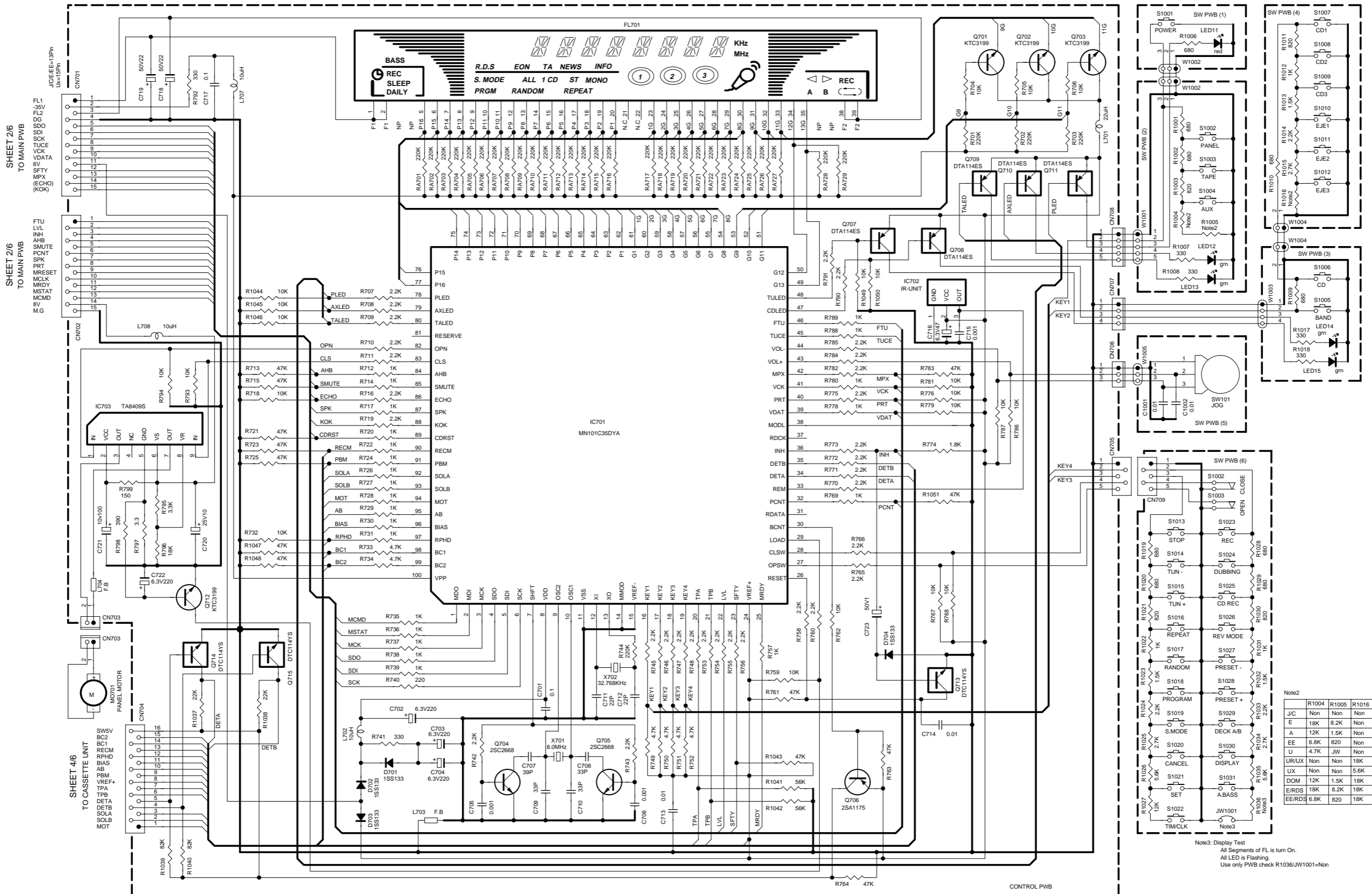
5

4

3

2

1



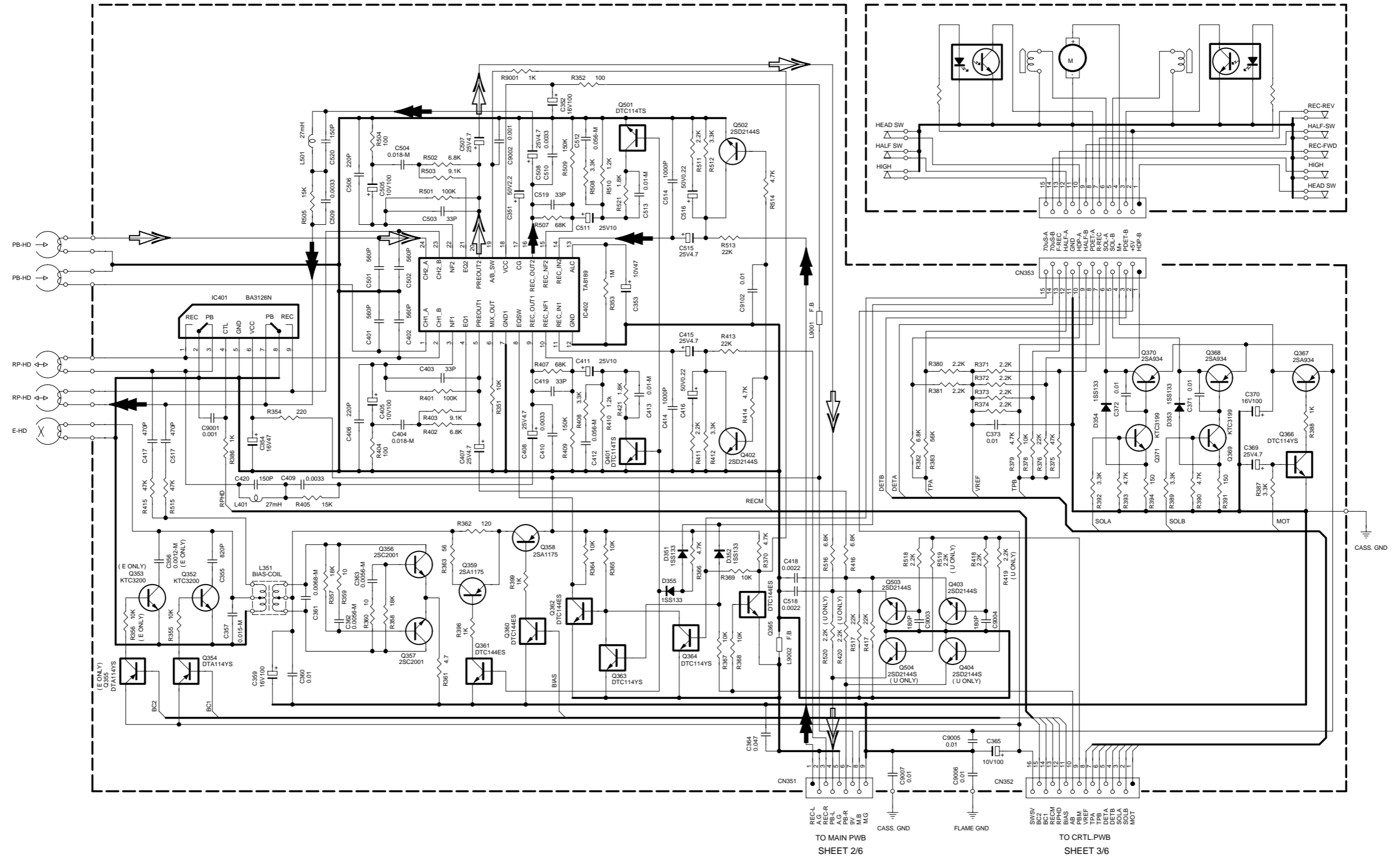
Note2

	R1004	R1005	R1016
J/C	Non	Non	Non
E	18K	8.2K	Non
A	12K	1.5K	Non
EE	6.8K	820	Non
U	4.7K	JW	Non
UR/UX	Non	Non	18K
LUX	Non	Non	5.6K
DOM	12K	1.5K	18K
E/RDS	18K	8.2K	18K
EE/RDS	6.8K	820	18K

Note3: Display Test
 All Segments of FL is turn On.
 All LED is Flashing.
 Use only PWB check R1036/JW1001=Non

■ Cassette amplifier section

5
4
3
2
1



** : C356, R356, Q353, Q355 FOR E VERSION ONLY.
 ** : R419 & R519, R420 & R520, Q404 & Q504 FOR U VERSION ONLY.

⇒ TAPE P.B. signal
 → RECORDING signal

CD Servo & CD Mechanism control section

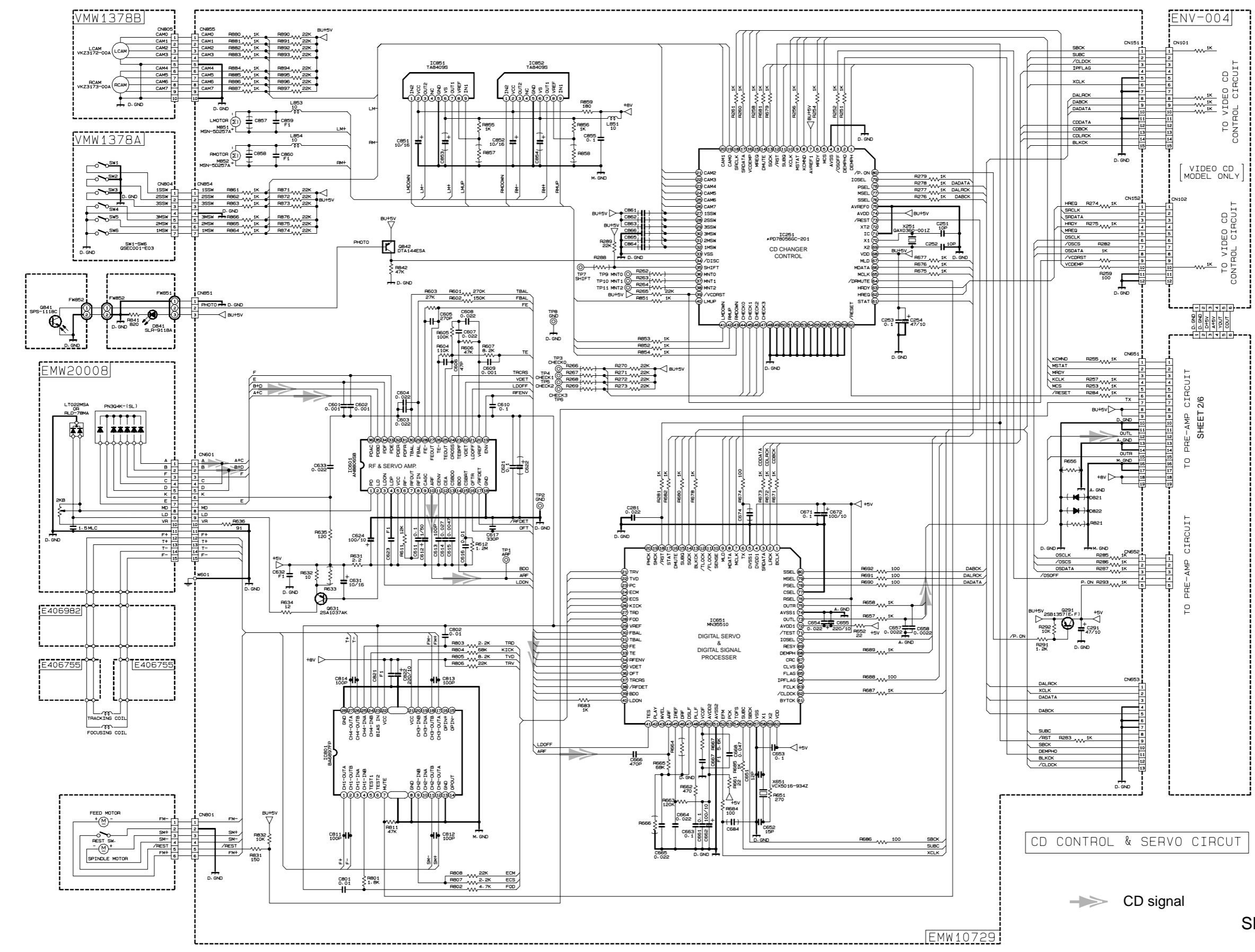
5

4

3

2

1



A B C 2-6 D E F G H

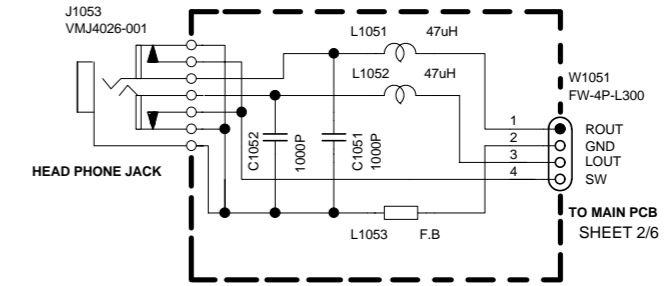
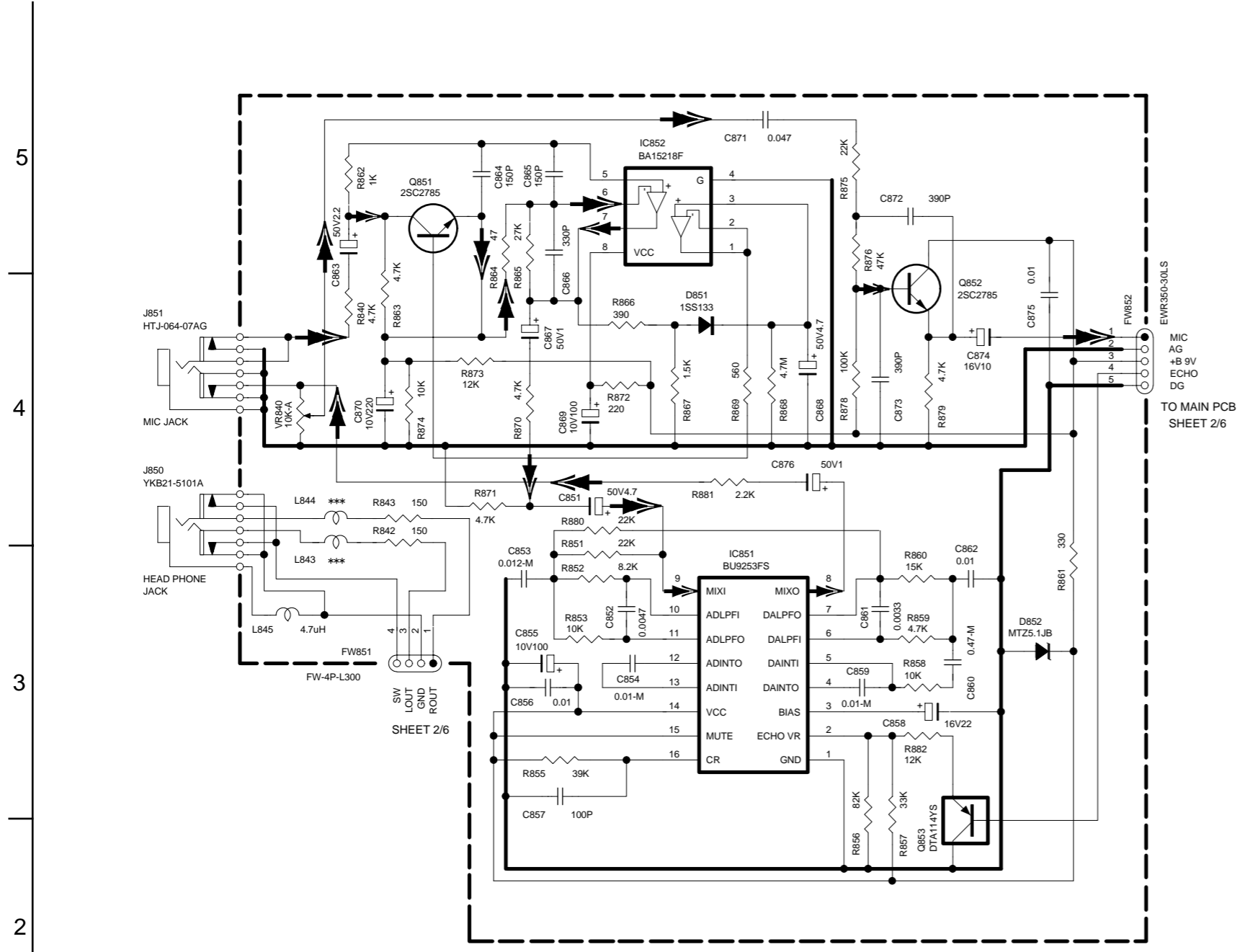
→ CD signal

CD CONTROL & SERVO CIRCUIT

EMW10729

■ Mic & headphone section (Ver. U/US/UT/UP/UY/UZ)

■ Headphone section (Only Ver. A)



5
4
3
2
1

A B C D E F G 2-7

➡ MIC signal

Printed circuit boards

■ Main board

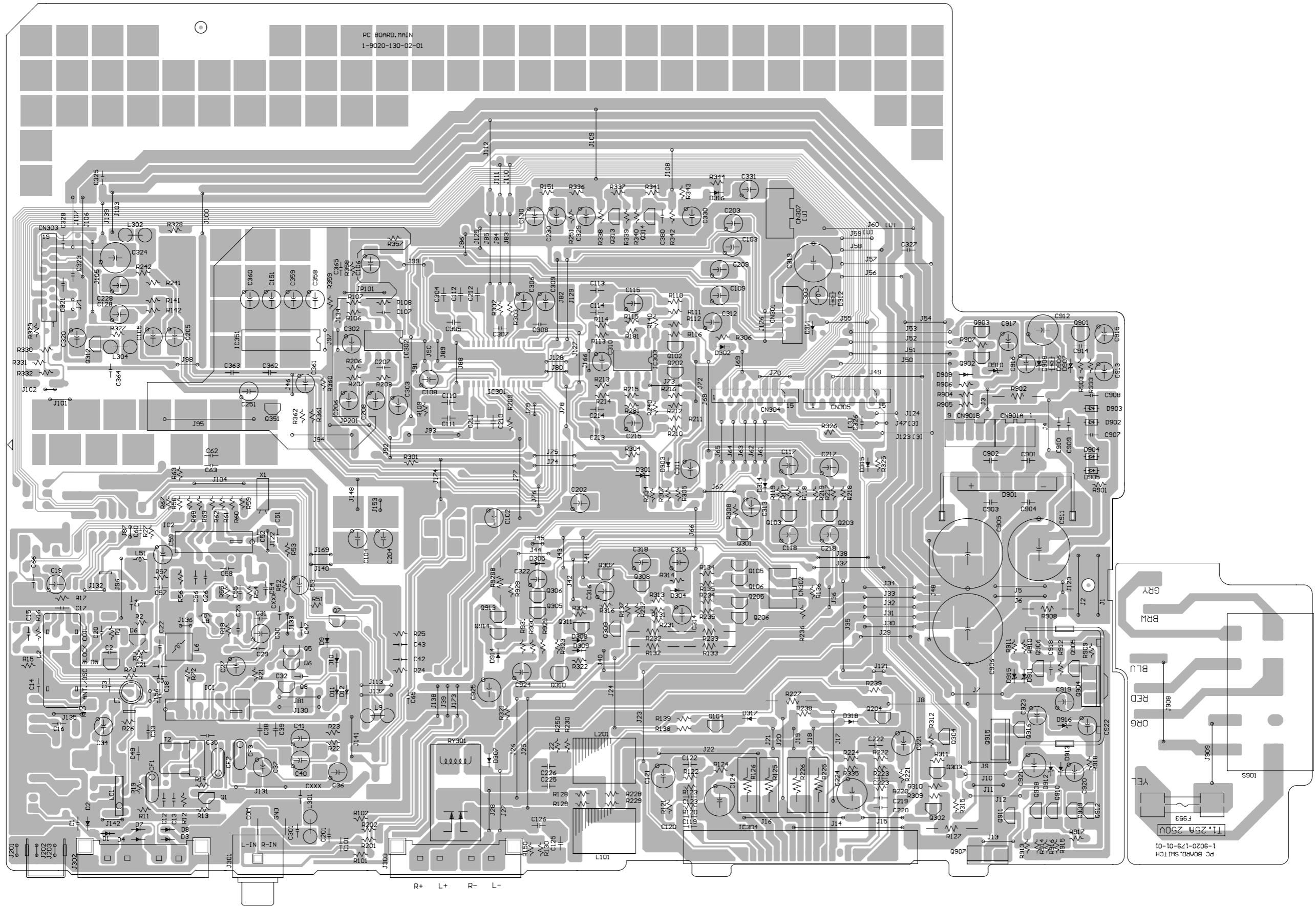
5

4

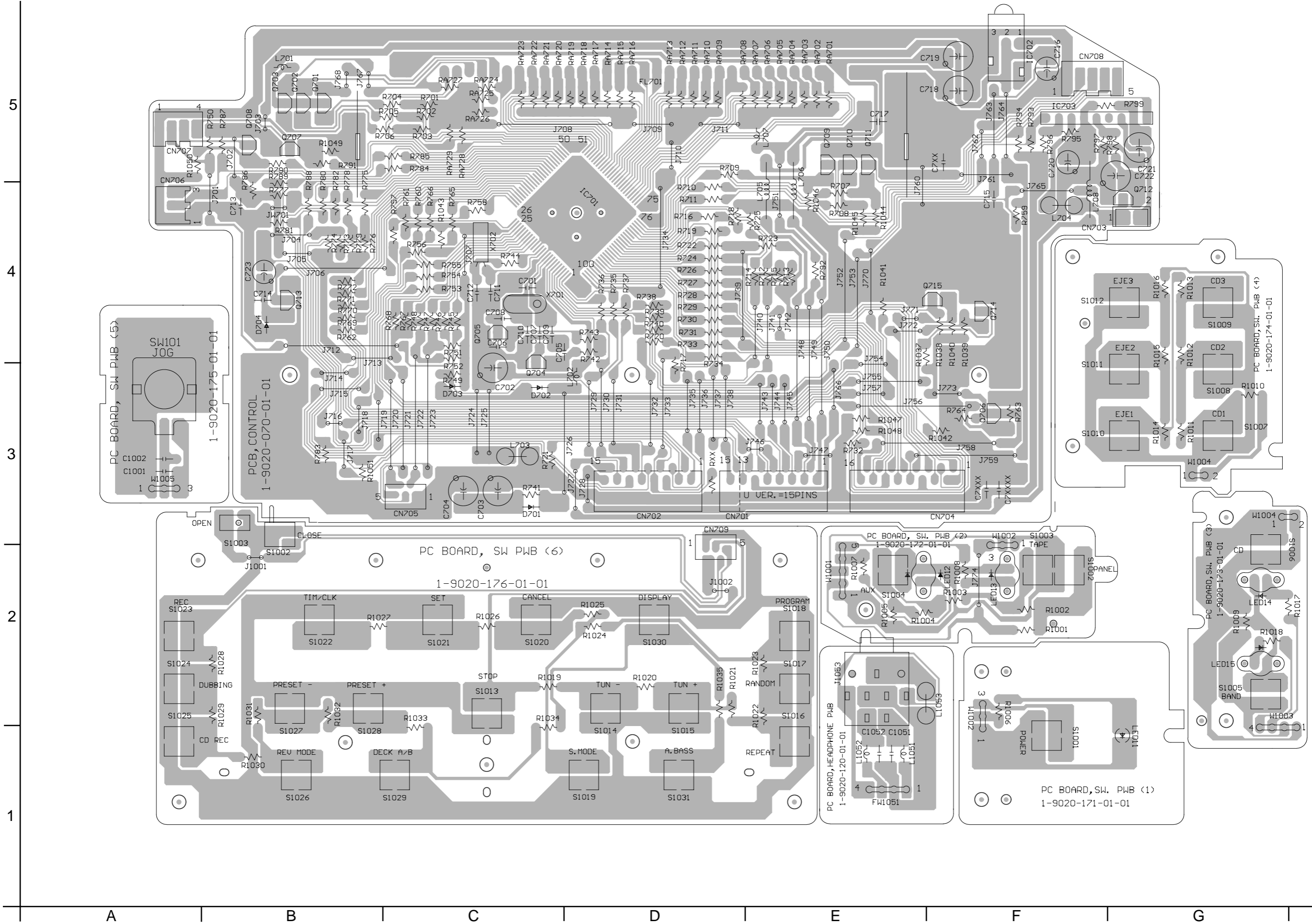
3

2

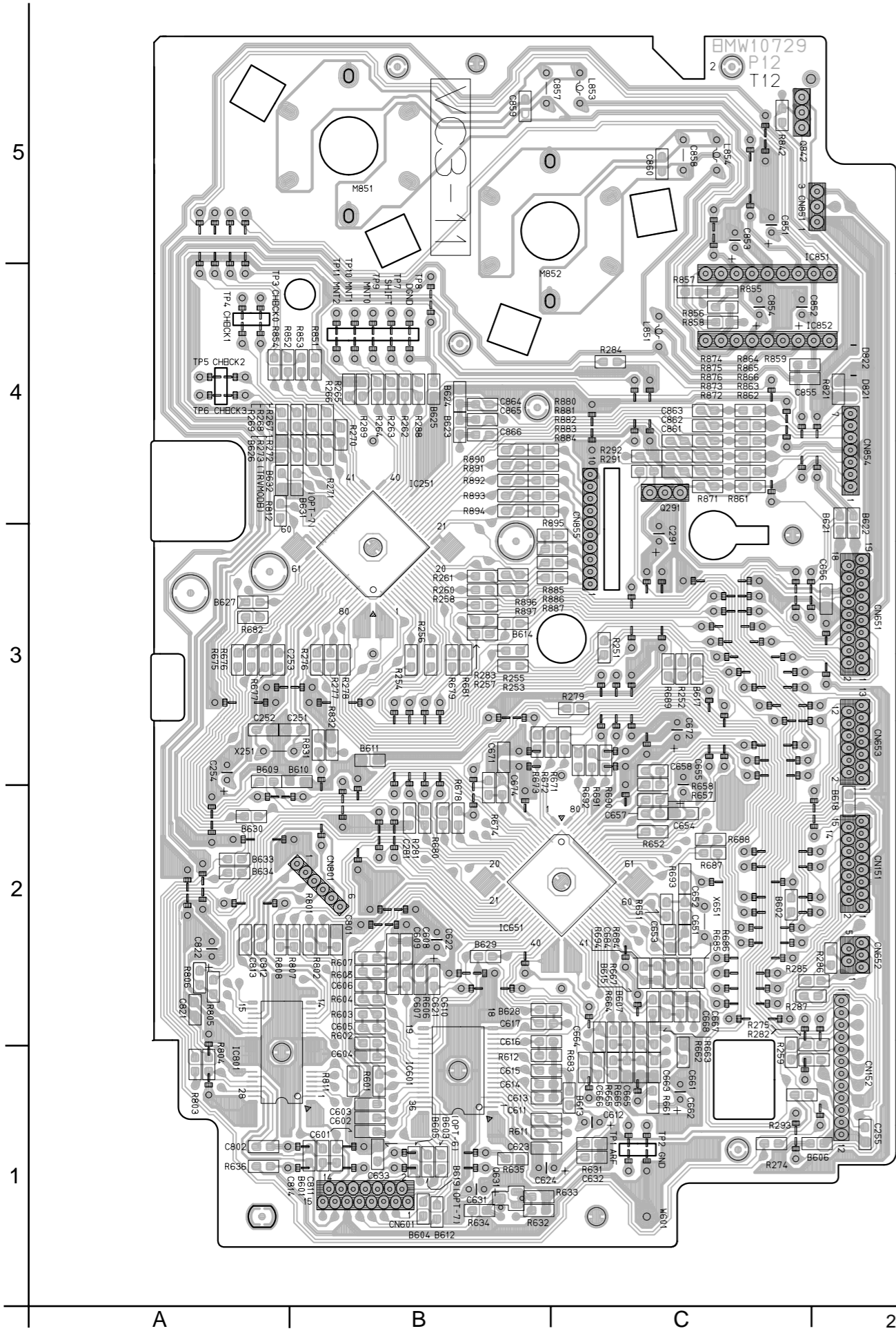
1



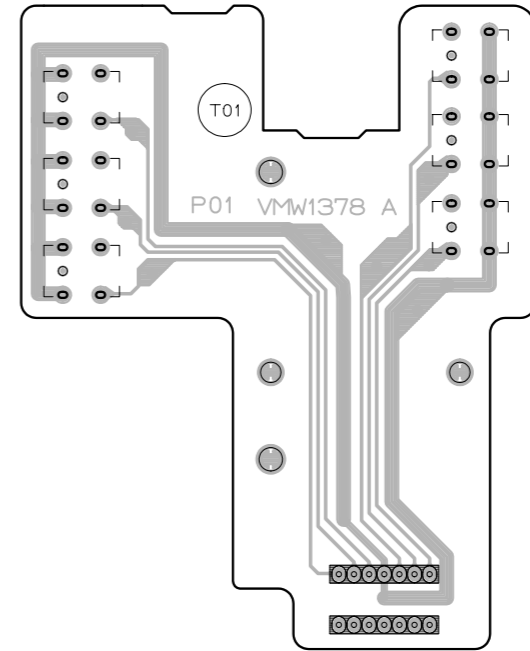
Control & switch board



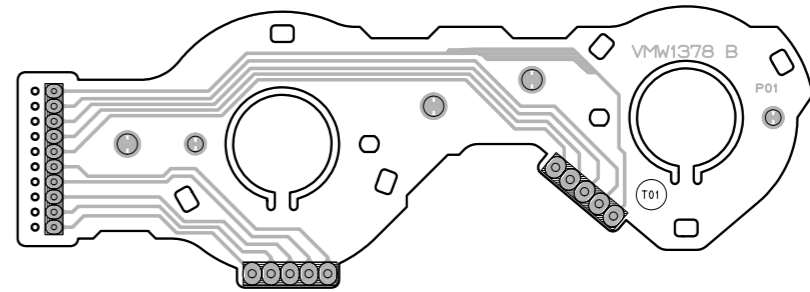
■ CD servo control board



■ CD Tray section switch board

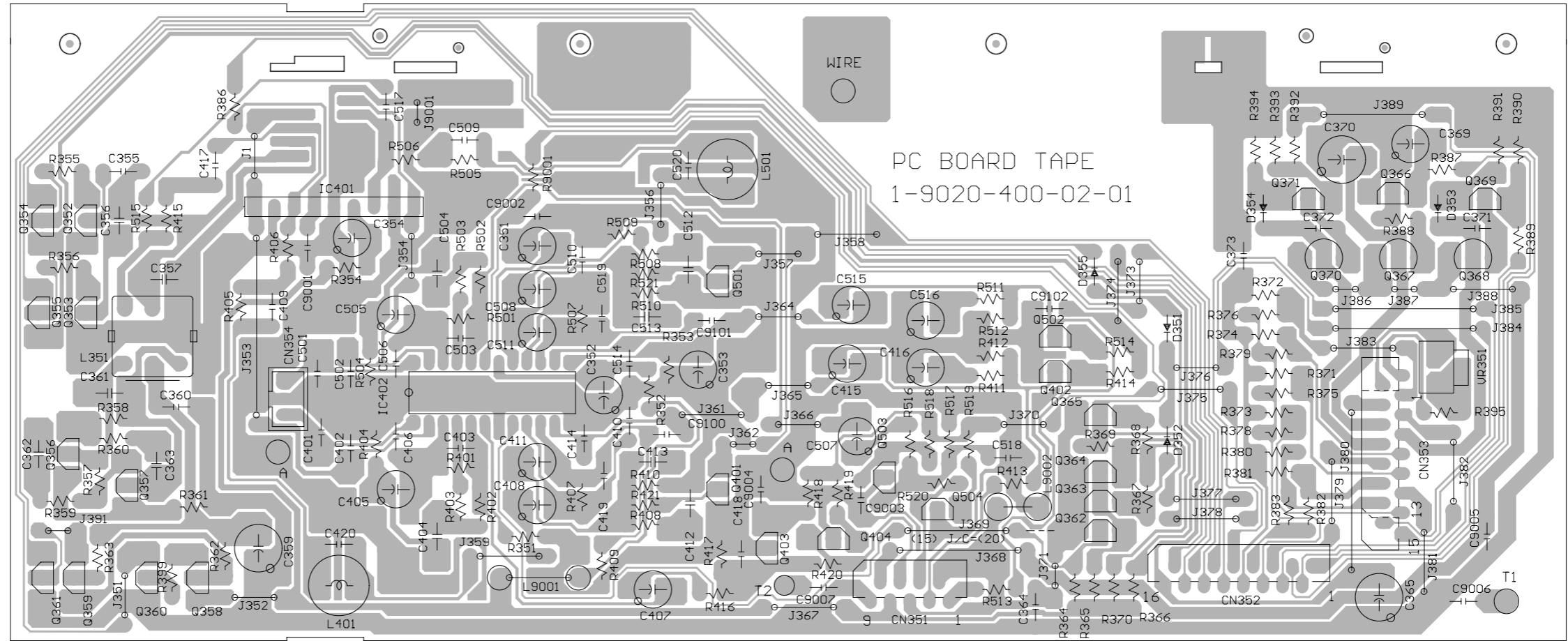


■ Cam switch board



■ Cassette amplifier board

5
4
3
2
1



■ Headphone & MIC board

